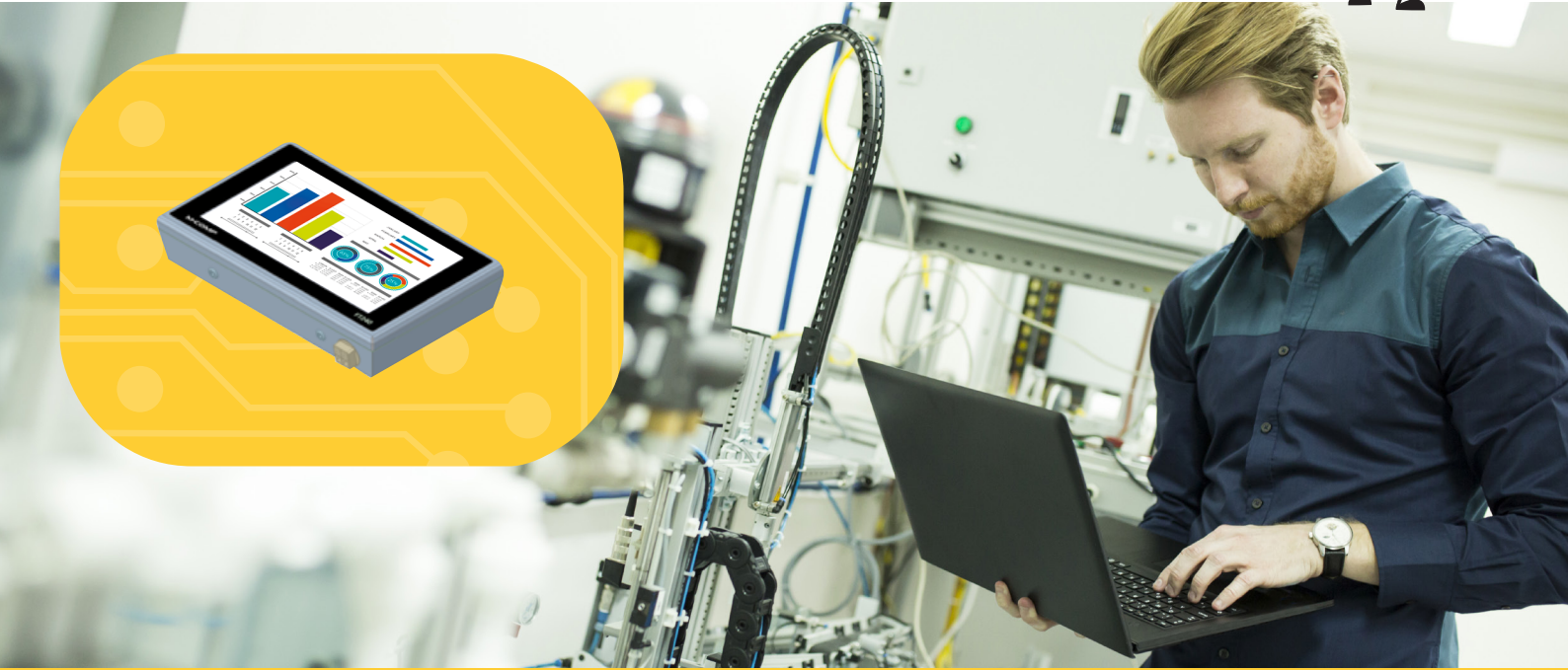


# M·COMP

*Bring components to life*



## M·COMP FT240

Powerful stainless-steel terminal for food industry

## Technical specifications

Model	Description
FT240	Powerful 24" full HD stainless-steel touch-terminal

Display and touch	Description
Size	24" TFT-LCD
Active area	531.36 mm (H) x 298.89 mm (V)
Format	16:9
Resolution	1920x1080 full HD
LED life time	50,000 Hours
Contrast ratio	5000:1 (typ.)
Luminance	300 cd/m2 (typ.)
Number of colors	16.7M
Viewing angle	89~89° (H) and 89~89° (V)
Touch	24" five-wire resistive

Computer	Description
CPU	4th generation Intel Core i3-4100E processor 2.4 GHz
Chipset	Intel® HM86
System memory	4GB DDR3L-1600 (up to 8GB on request)

I/O	Description
Lan	2 x 10/100/1000 Mbps
Serial port	2x RS232 2x RS232/422/485
USB port	4x USB 2.0 2x USB 3.0 (1 free)
Main power	1x IEC C14 power connector (male)

Storage	Description
Type	64GB 2.5" SSD (up to 1TB on request)
Expansion type	Full-Size Mini PCI Express Mini Card with mSATA

Power supply	Description
Voltage	100 - 240 VAC, 50/60 Hz
Power consumption	40 W (Max.)

Mechanical	Description
Cabinet	AISI 316 stainless steel
Dimensions	132.28 mm (D) x 428.38 mm (Hi) x 688.79 mm (W)
Weight	18 kg
IP Rating	IP65 (IP54 at cable input)

Environment	Description
Working temperature	-5 to +35 °C
Storage temperature	-20 to +60 °C
Humidity	10-90%
CE-marking	According to EN 61000-6-2 and EN 61000-6-3
IP approved	According to IEC/EN 60529

## Features

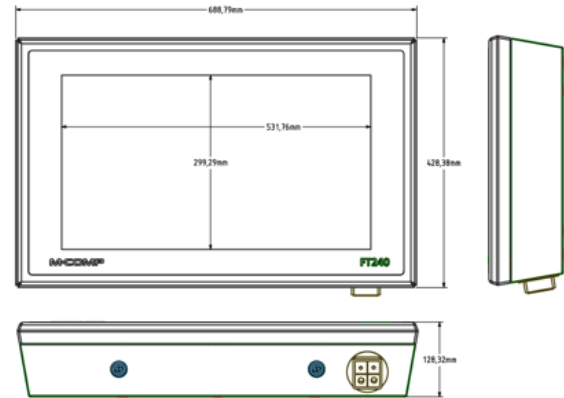
The M-COMP FT240 is a powerful 24" Full HD touch-terminal which is made for the food industry.

The cabinet is based on high quality AISI 316 stainless steel that is IP65 water and dust proof, which means FT240 can be used in very tough environments. The front is protected by a strong foil in front of the screen/touch glass, to ensure, that there is no scatter of glass, if screen/touch is broken.

The powerful Intel Core 2.4 GHz I-PC supports input/output like LAN, USB and RS232/422/485 which make it to a flexible and data-processing solution.

Suitable for use in the food industry or other industries with extended requirements for performance and environment

The high brightness on 300 nits insures that the content on the monitor is seen clearly in all kinds of environments.



## Ordering information

Parts no.	Description
14744	FT240 24" Full HD Stainless steel terminal w/touch, 2.4 GHz CPU, 4GB RAM and 64GB SSD

The FT240 24" touch-terminal can be delivered in other variants and with accessories like power cable, wall and pillar bracket (see M-COMP accessories brochure).



**Demand**



**Idea**



**Development**



**Test**



**Production**



**Distribution**