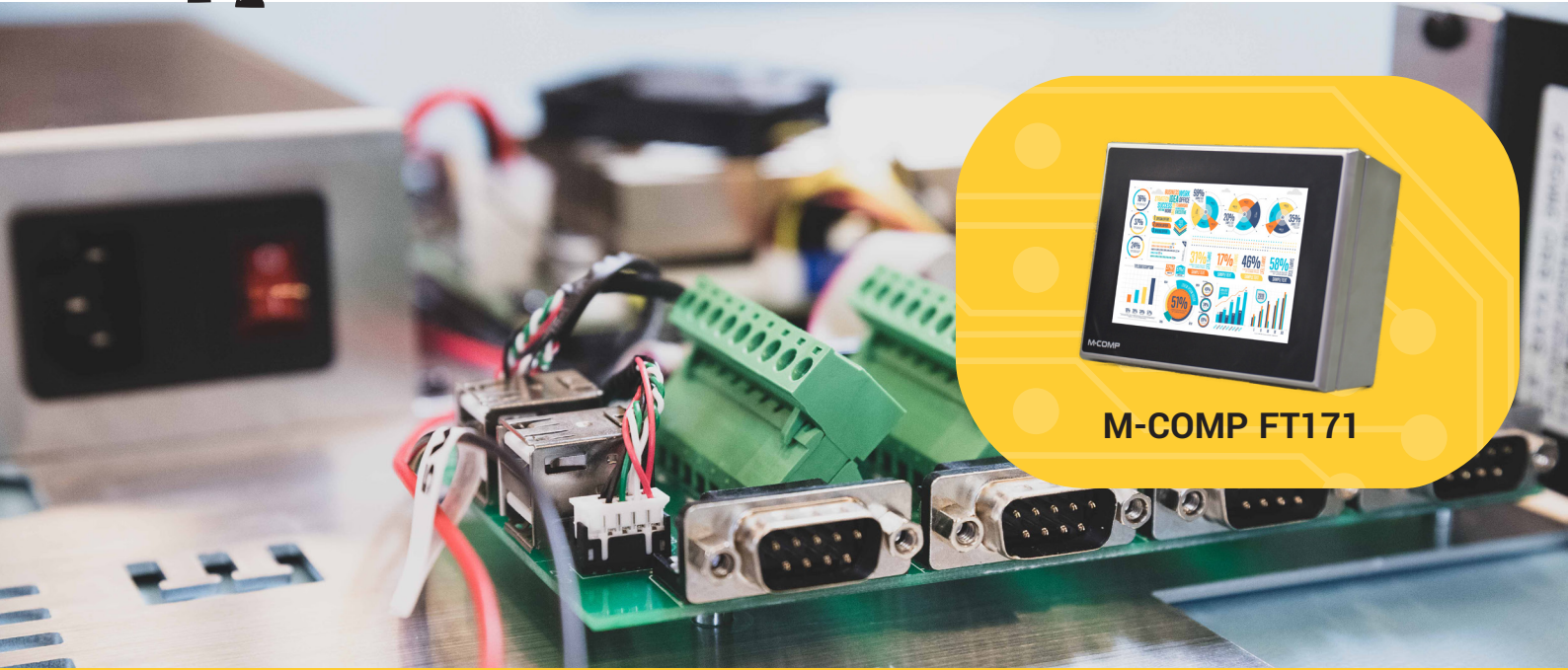




M-COMP

Bring components to life



M-COMP FT171





7 reasons to choose M-Comp FT terminal:

- 1. Modular design
- 2. Reliability
- 3. Performance
- 4. Repairability
- 5. Sustainability by refurbishment
- 6. Produced in Denmark/EU
- 7. High return on investment



Modular Design

Our modular design ensures that you have a terminal which always is up and running. When your terminal breaks down, easily remove the damaged item and switch to a new spare part.

When you need to upgrade your electronics on your terminal, ask for our upgrade kit and you now have an updated model.

In our entire FT series you can easily make the products fit your demand. The FT series hold different screen sizes, and the key is that it is the same innerplate holding all electronics. A complete exchange of system can happen on the production line without having to remove the complete terminal. This operation takes only 10 minutes, resulting in low down time.

The fronts of the terminals are likewise one spare part, so an exchange of a broken front can be done in one operation on the production line.

All our accessories is a “one-fit-all” policy.



Reliability

Reliability is a main factor. From early delivery of raw food materials – to production handling - to packing and shipping. The reliability of the FT products will help you manage the process of work without fallouts and down time.

The FT terminals are developed to work in harsh environments with water, dust and greasy surroundings. They are designed to resist a cleaning process with detergents.

The Terminals are built to achieve the IP65 standard, which means they are protected from total dust ingress and protected from low pressure water jets from any direction. The standard split gland for cables entry used is IP54. Upon request we can upgrade to IP65.

The FT terminals are built in AISI 316 stainless steel, which is acid resistant and on top of this, it has been treated to give a consistent and nonstick surface. This to ensure a long living and good looking terminal.



Performance

To achieve high and steady performance we have designed a thoroughly thought out built-up, in which all the chosen technology complement each other.

The hardware system in the FT terminals and accessories are developed to ensure a product, that gives you the option to have fully functional terminal or system, in which you can collect different data, see and control the different processes, monitoring the production output, execute and follow orders and a lot more depending on your software choice and setup. The hardware system includes a powerful Intel Core I3 processor, 4GB RAM and 64GB Solid-state disc. and a high reliably power supply.

The combination of the processor and the additional technology in the FT terminals, are developed to ensure that you have a long-lasting product without any break downs and major down time. The FT terminals thereby continuously keep a high, steady and long-lasting performance over time.



Repairability

The feature of being able to open the terminal with a single key in the production environment giving instant access to all parts of the inside terminal, makes repair easy for factories with few or no repair staff. For any service call you bring either a front or an innerplate and the terminal will be back in operation. The collected spare can be sent to us for refurb.

With the FT terminals you will be secured spare parts for many years, meaning that our terminals will keep its value as a long-term investment.

Our repair service give extended life to your product. Our on-line system for handling your repair claims, gives you an easy way to register your service request at any time convenient for you. Once your claim is authorized, you will receive information for your full tracking following the process of your unit from arrival on our site to ship out after repair.



Sustainability By Refurbishment

All components used in the FT terminals are premium quality. All the electronics will last 5 to 10 years, and the cabinet as such will last for more than 20 years. For this reason we have introduced our refurb program, where innerplates returned with defect computer can be refurbished with new and maybe upgraded computer, keeping power supply and other vital parts running for many more years.

Thereby we have less waste objects to be thrown out, as we recycle all parts possible. Old mechanical parts will be washed and cleaned to be sold as refurbished parts.

From experience the most vulnerable part is the touch and its protective film. In our refurb process we exchange the touch and the film, and clean the metal giving new long life to the terminals without disposing more parts than necessary. All this to save costs for our customers and to protect the environment.



Produced In Denmark

By being placed in Denmark we have easy logistic reach to the World. Denmark being a part of the EU, provides free and fast movement of spare parts and refurbished spare parts as well as new products, as no customs declarations are needed.

The workmanship of Danish manufacturing is well recognized world wide as good quality.



High Return On Investment

With the fast moving technology a need to be able to make upgrades on electronic components has become vital. The main reason for system operators to change hardware, are often due to changes in technology platforms. In our FT terminals only 50% of the cost are related to the electronics. Therefor it would be a big waste, if the complete terminal was thrown out only because of a new CPU was needed. Our mechanical life cycle is minimum 20 years, and a technology cycle is only 5 years. This gives a good reason to do upgrades rather than exchange. A technology update are often possible at 1/3 of the cost compared to a new terminal, giving a very good ROI on our products.



Technical specifications

Display and touch	FT171
Size	17,3" TFT-LCD
Format	16:9
Resolution	1920x1080
LED life time	50.000 Hours
Contrast ratio	600
Luminance	400 cd/m2
Response time	Ton: 37ms Toff: 3ms
Viewing angle	12 o'clock = 60° 6 o'clock = 80° 3 o'clock = 80° 9 o'clock = 80°
Touch type	Resistive touch

Computer	Common features
CPU	4th generation Intel® Core™ i3-4100E processor 2.4 GHz
Chipset	Intel® HM86
System memory	4GB DDR3L-1600 (can be other size on request)

I/O	Common features
Lan	2 x 10/100/1000 Mbps
Serial port	4x RS232 (COM)
USB port	4x USB 2.0 1x USB 3.0
Power out	5VDC 1A

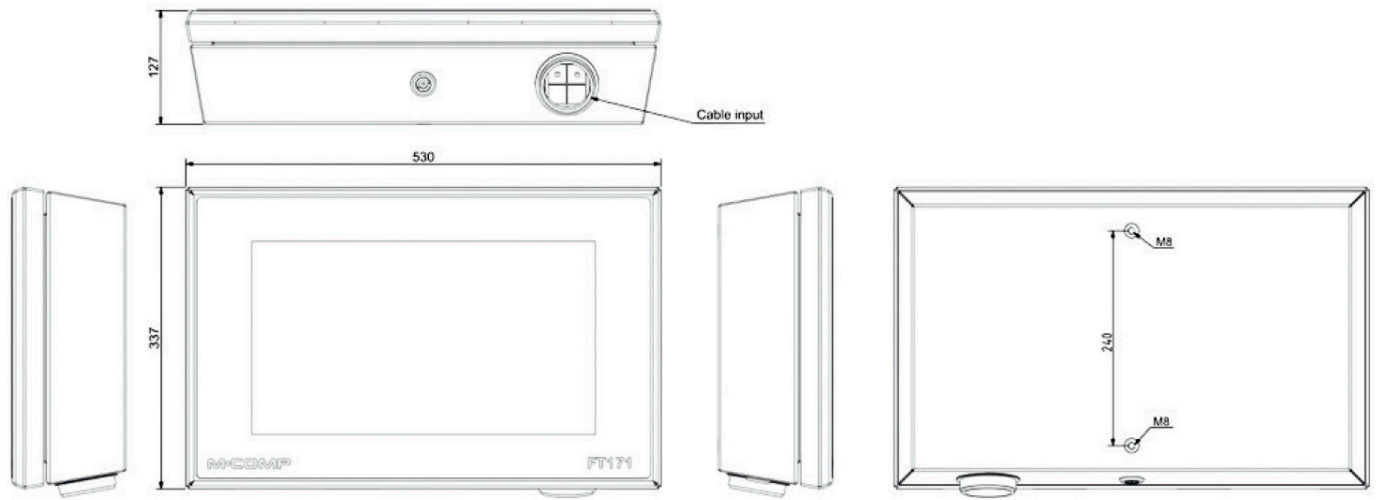
Storage	Common features
Type	64GB 2,5" SSD (can be other size on request)
Expansion type	Full-Size Mini PCI Express Mini Card with mSATA

Power supply	Common features
Voltage	100 – 240 VAC, 50/60 Hz
Power consumption	60 Watt

Mechanical and environment	FT171
Cabinet	AISI 316 stainless steel
Dimensions (D, H, W)	127mm x 337mm x 530mm
Weight	13kg
IP Code	IP65 (IP54 at cable input)
Working temperature	- 10 °C to + 35 °C
Storage temperature	- 20 °C to + 60 °C
Humidity	20% to 95% not condensing.
Emission	EN 61000-6-3
Immunity	EN 61000-6-2

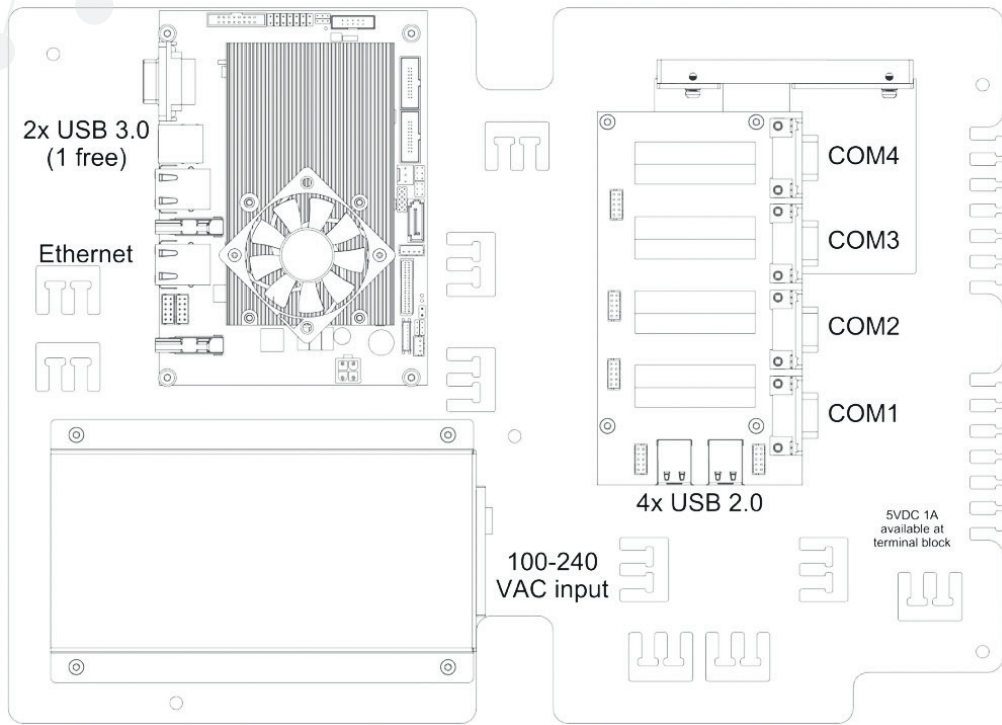
FT 171

Mechanical Drawing

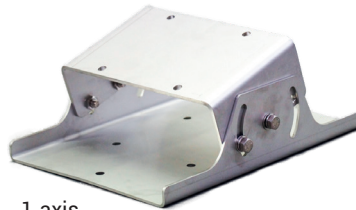


Connections

Mechanical Drawing



FT Accessories



1 axis



2 axis

The 1 axis

FT1 Wall Mount is easy to install and to service. When you have installed your FT1 Wall Mount, you easily attach your FT terminal. The FT1 Wall Mount turns horizontal only.

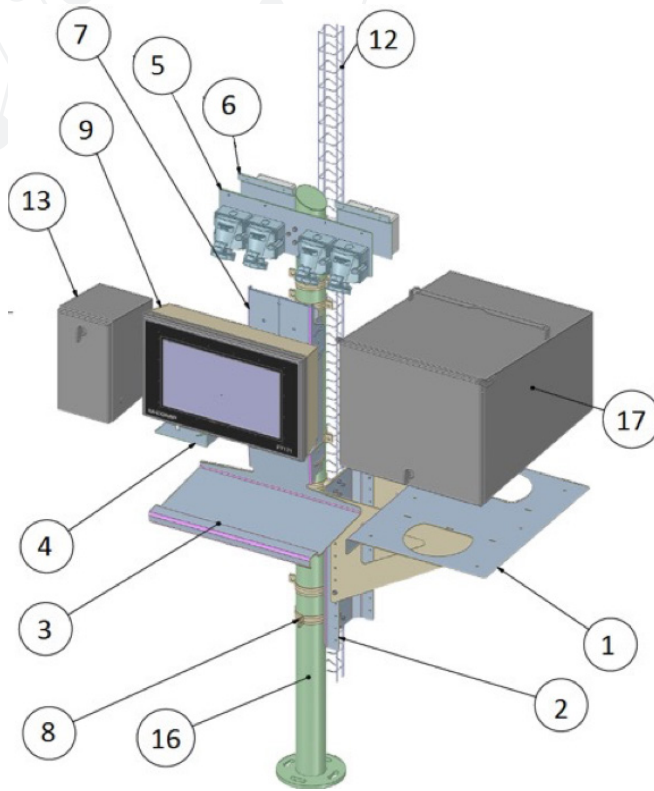
The 2 axis

FT2 Wall Mount is also easy to install and to service. When you have installed your FT2 Wall Mount, you easily attach your FT terminal. The FT2 Wall Mount turns both horizontal and vertically.

The floorstand

FTS1 Floor stand gives you the opportunity to place your terminals on the floor where ever need it. Set up the floor stand with 4 screws into the floor, and then easily mount any of the FTS accessories you want directly on the floor stand, including the FT Terminals up to 24". Ask for the accessory catalog to see all the options within accessories for the FTS1 Floor Stand.

FT Accessories



Parts no.	Description
1	14823 FTS5 Shelf for printer
2	14821 FTS3 Mounting bracket for printer shelf
3	14820 FTS2 Keyboard arm
4	14825 FTS7 Shelf for scanner
5	14829 FTS11 Plate for power outlets
6	14855 FTS17 IT Box plate
7	14841 FTS15 Terminal bracket
8	14826 FTS8 Ringbracket for floor stand
12	14828 FTS10 Cable tray 3.0 meters
13	14824 FTS6 Scanner box
16	14819 FTS1 Floor stand 1,9 meters
17	14822 FTS4 Printer box



Demand



Idea



Development



Test



Production



Distribution